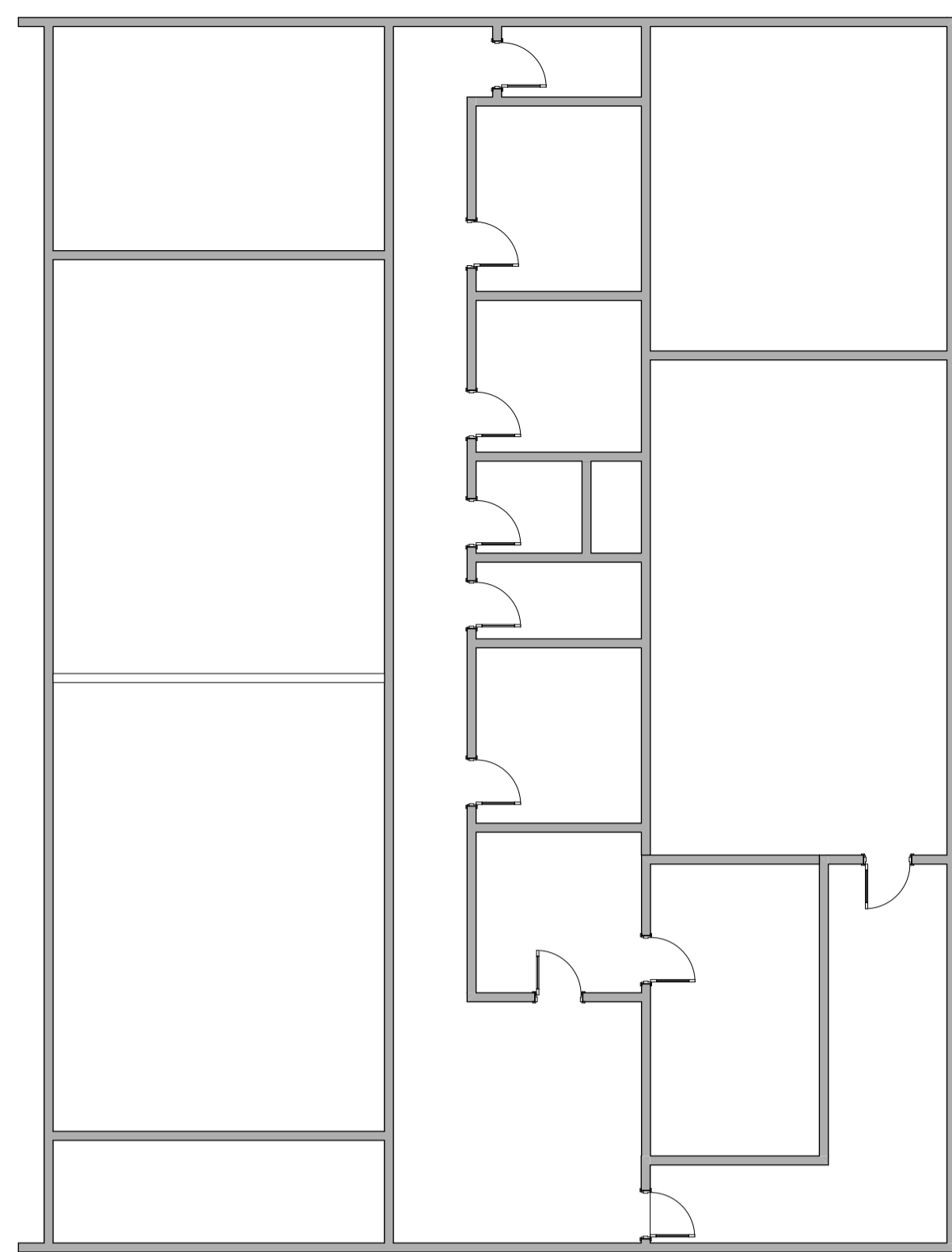
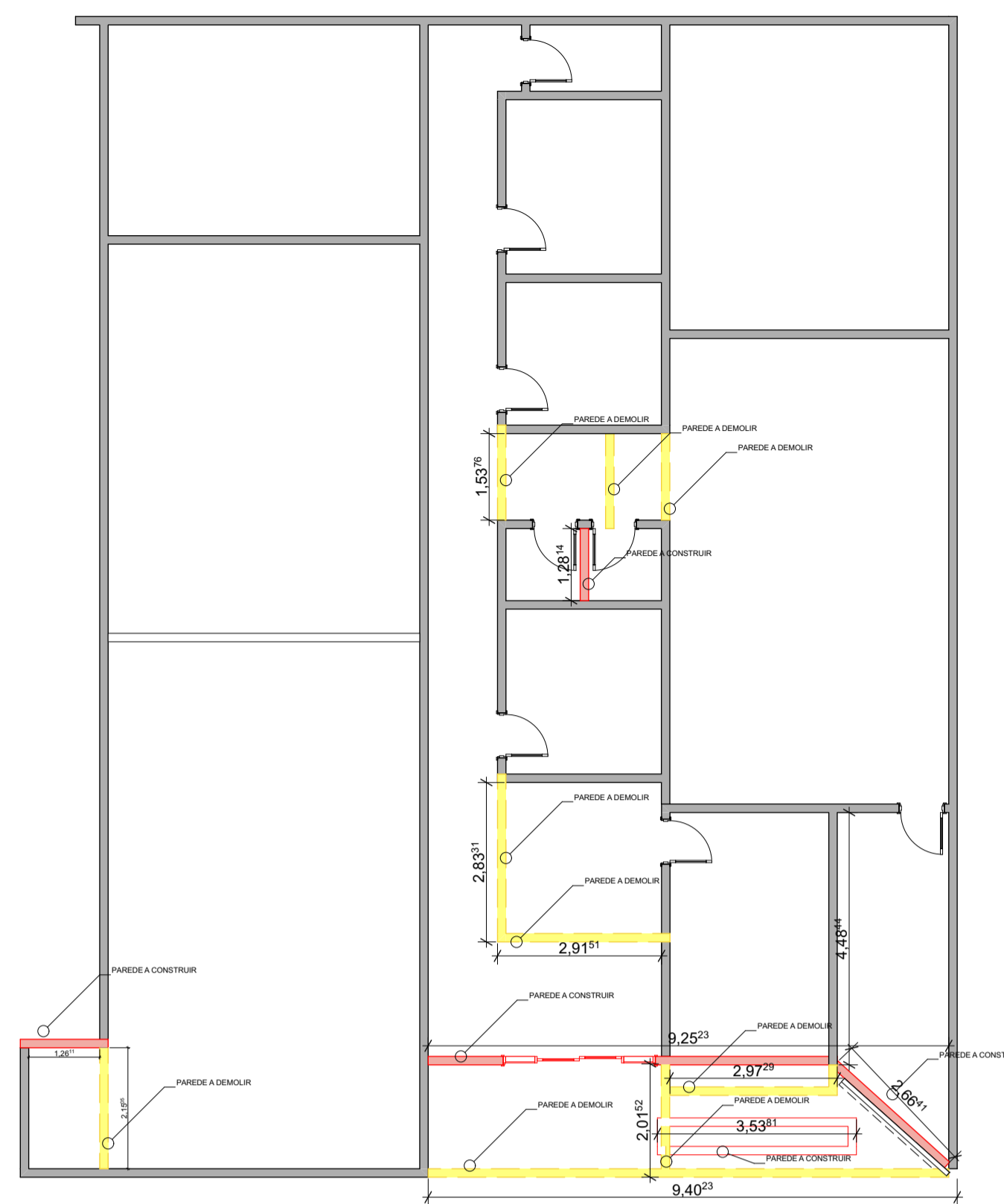


0.1 PLANTA DE LOCALIZAÇÃO 1:39,09



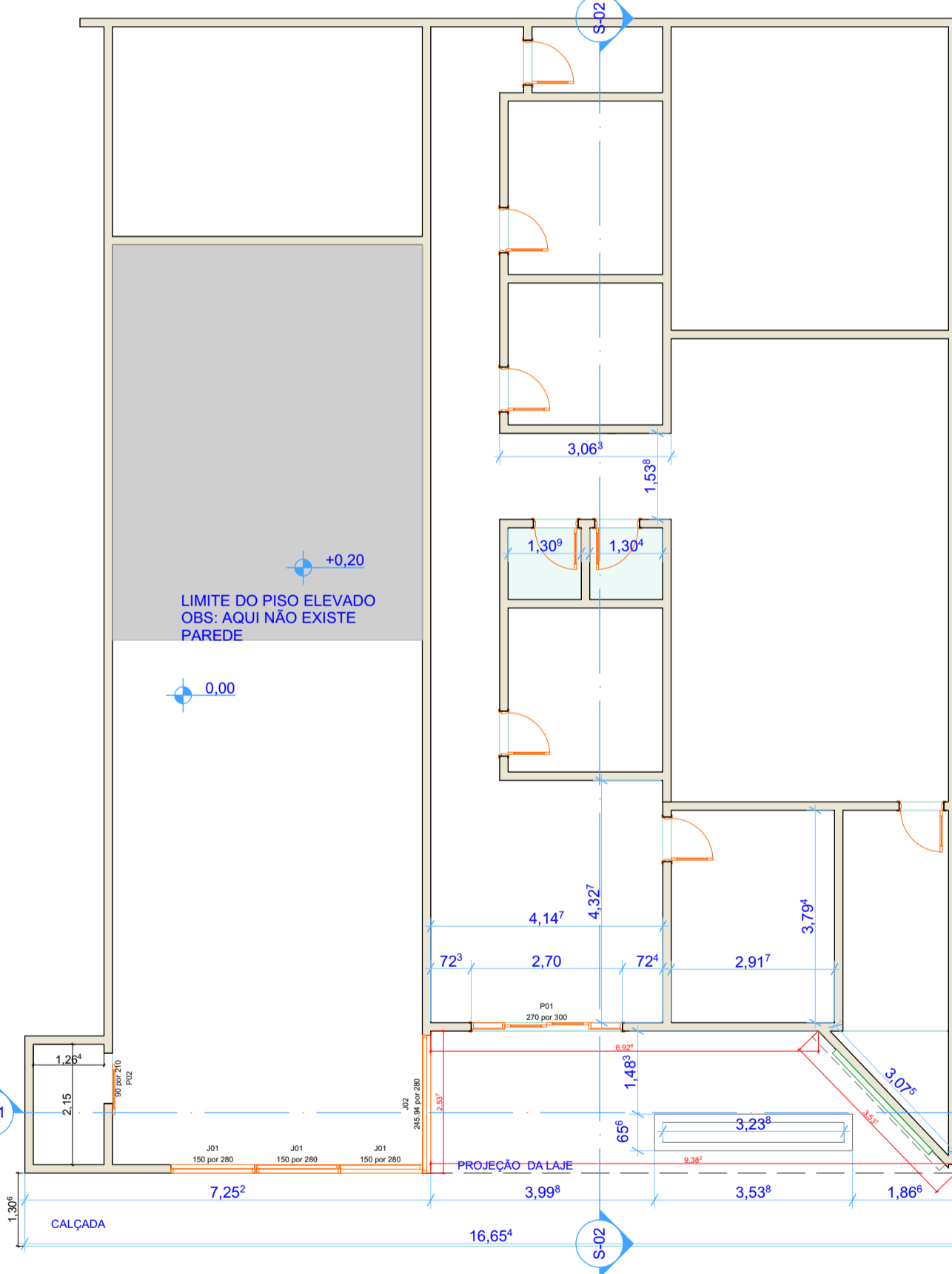
0.2 PLANTA ATUAL 1:100



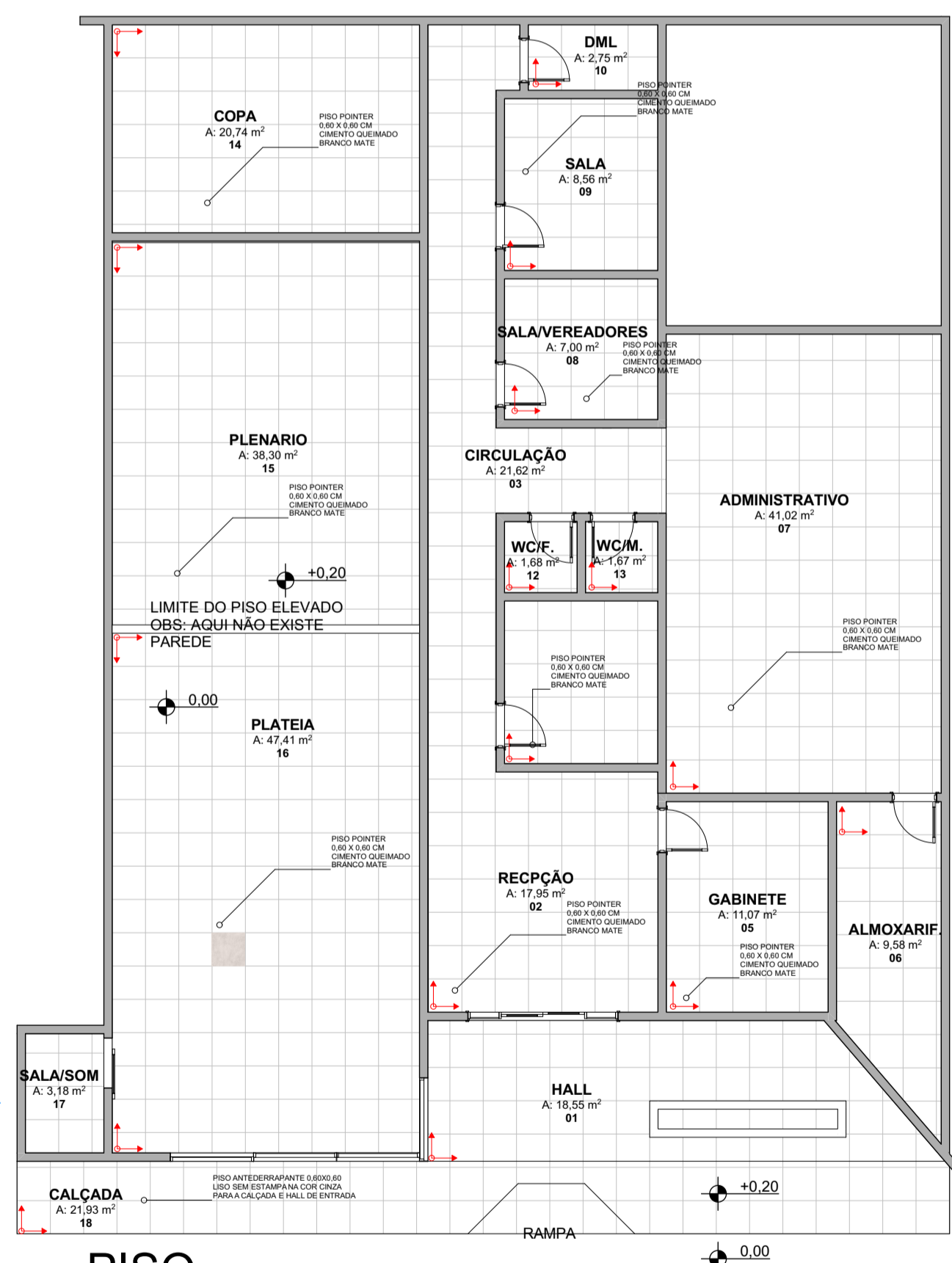
0.3 PLANTA DEMOLIR/CONSTRUIR 1:100



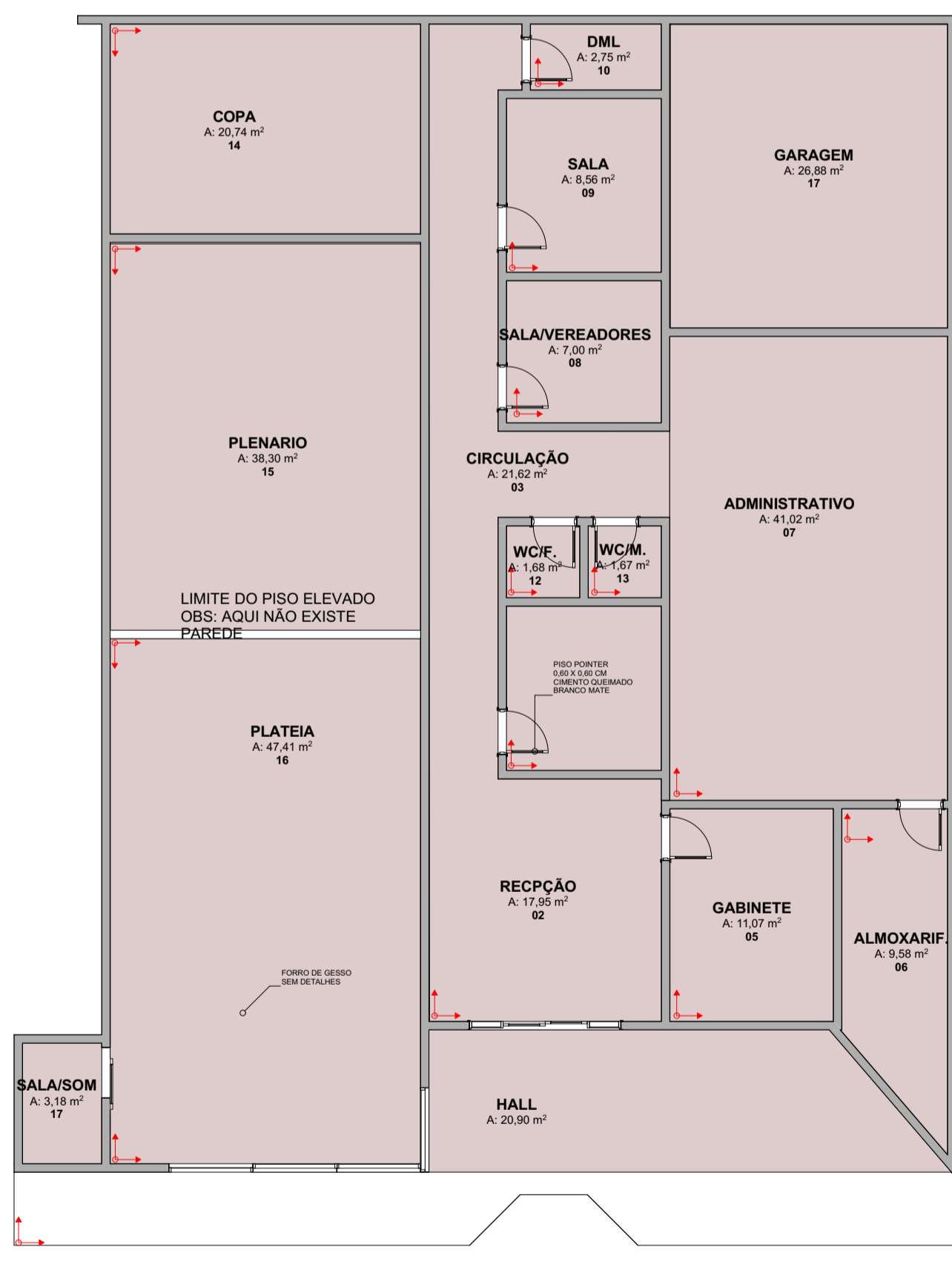
Item	Descrição	Quantidade	Valor Unitário (R\$)	Valor Total (R\$)
01	...	...	...	...
02	...	...	...	...
03	...	...	...	...
04	...	...	...	...
05	...	...	...	...
06	...	...	...	...
07	...	...	...	...
08	...	...	...	...
09	...	...	...	...
10	...	...	...	...
11	...	...	...	...
12	...	...	...	...
13	...	...	...	...
14	...	...	...	...
15	...	...	...	...
16	...	...	...	...
17	...	...	...	...
18	...	...	...	...
19	...	...	...	...
20	...	...	...	...
21	...	...	...	...
22	...	...	...	...
23	...	...	...	...
24	...	...	...	...
25	...	...	...	...
26	...	...	...	...
27	...	...	...	...
28	...	...	...	...
29	...	...	...	...
30	...	...	...	...
31	...	...	...	...
32	...	...	...	...
33	...	...	...	...
34	...	...	...	...
35	...	...	...	...
36	...	...	...	...
37	...	...	...	...
38	...	...	...	...
39	...	...	...	...
40	...	...	...	...
41	...	...	...	...
42	...	...	...	...
43	...	...	...	...
44	...	...	...	...
45	...	...	...	...
46	...	...	...	...
47	...	...	...	...
48	...	...	...	...
49	...	...	...	...
50	...	...	...	...



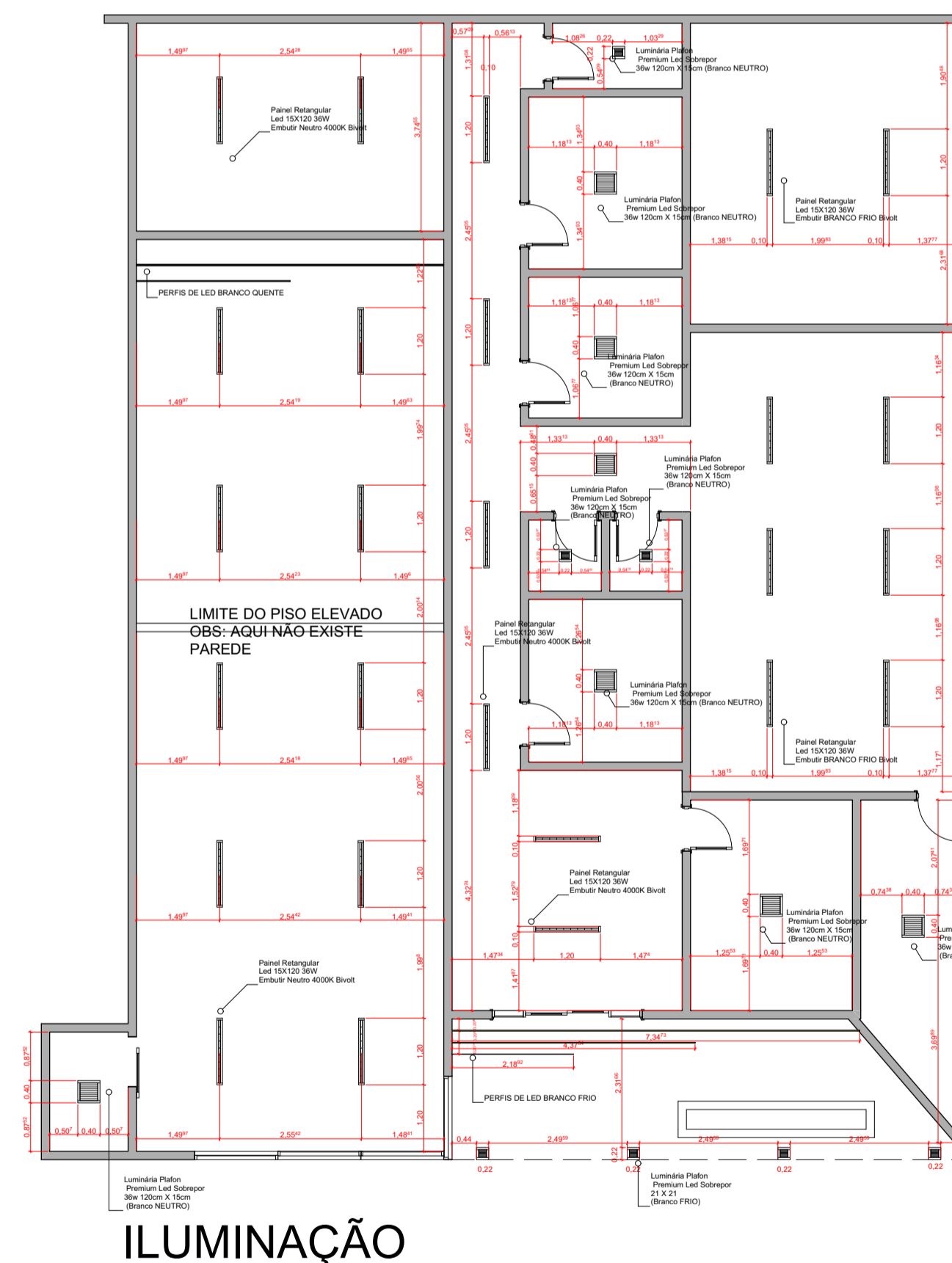
0.4 PLANTA BAIXA TÉCNICA 1:100



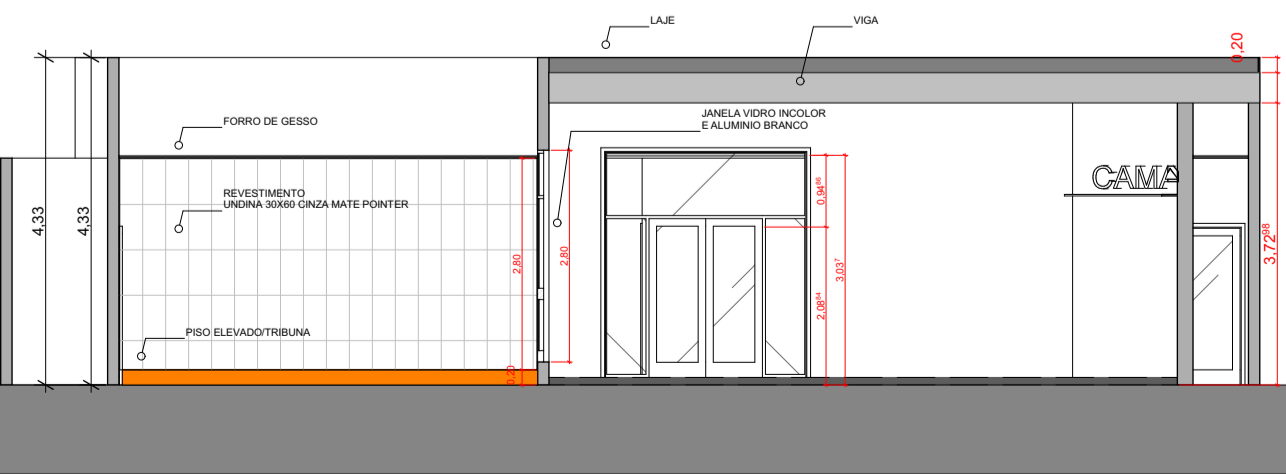
05 Planta de piso 1:100



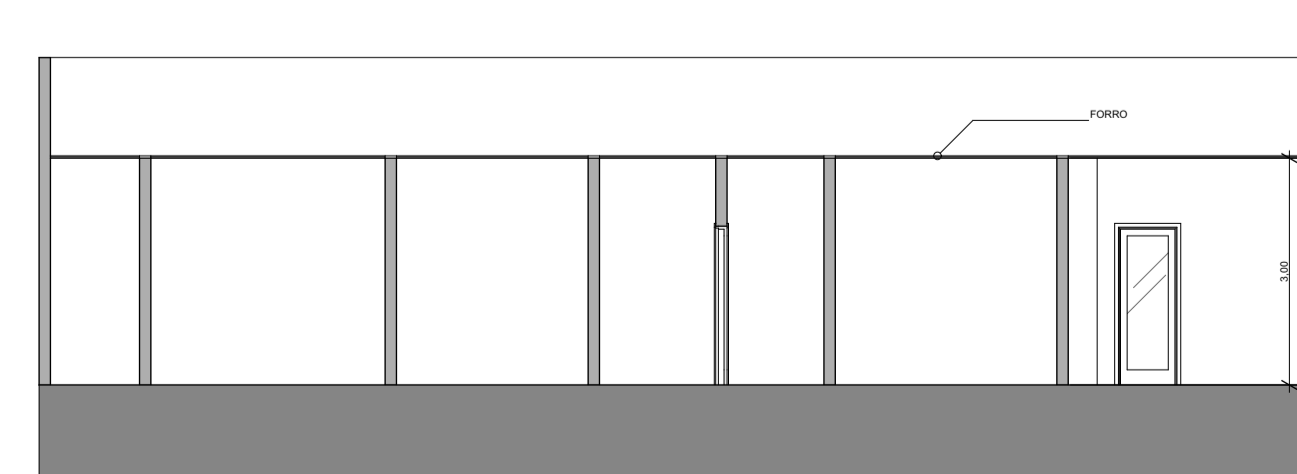
0.6 PLANTA DE FORRO 1:100



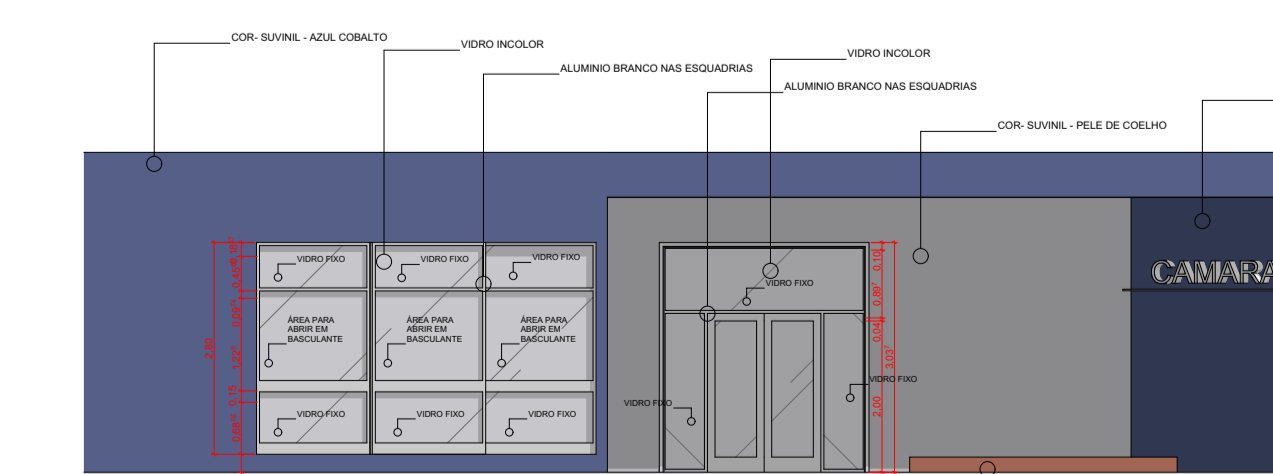
07 Planta de Iluminação 1:100



S-01 Corte 1:100



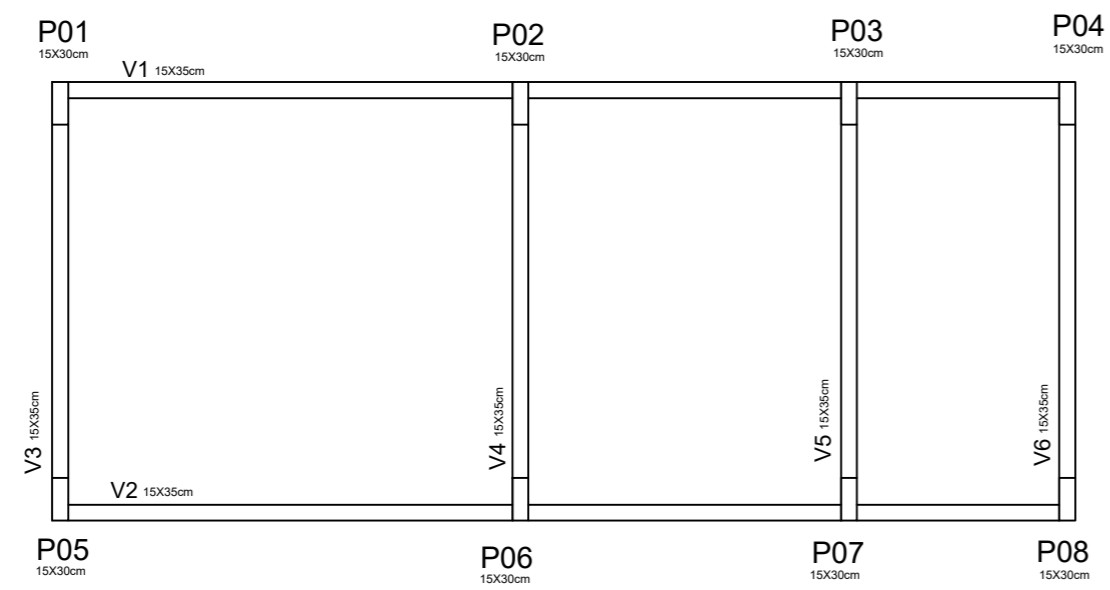
S-02 Corte 1:100



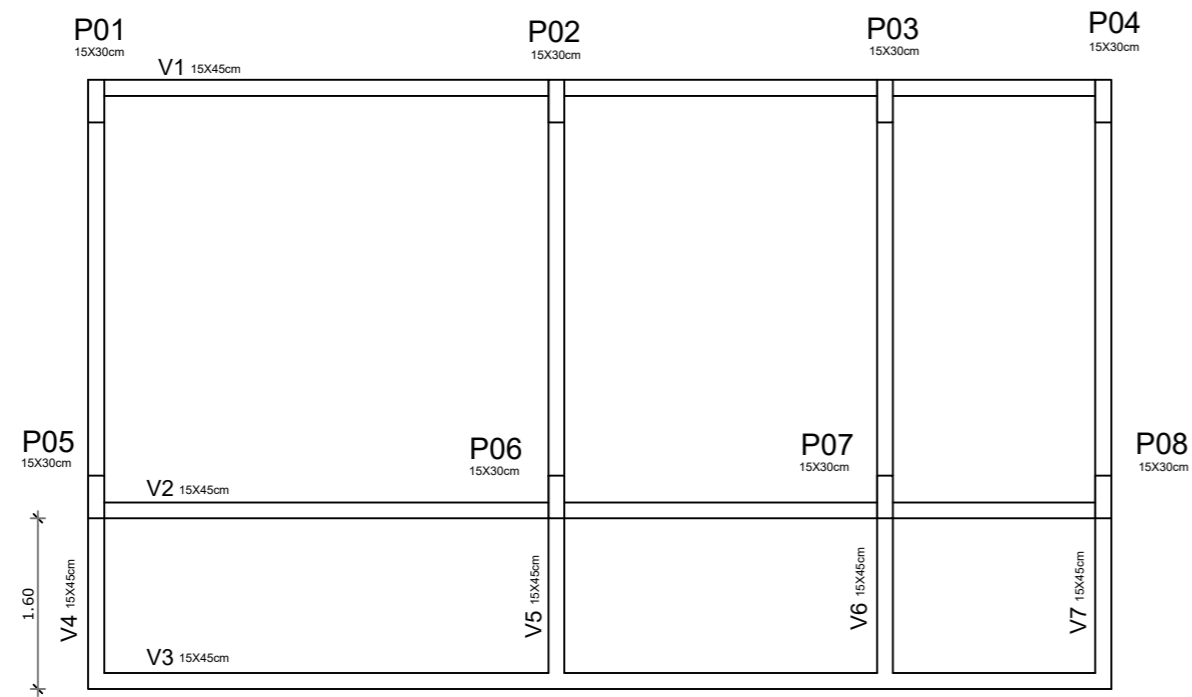
1 Elevação 1:100

**PROJETO**  
**PROJETO REFORMA DA CÂMARA**  
 ENDEREÇO: RUA: PEDRO MATIAS DE SOUZA CIDADE: BARAÚNA  
 CLIENTE: CÂMARA MUNICIPAL DE BARAÚNA  
 ARQUITETA: IRONEIA DOS SANTOS LIMA  
 CAU: A249161-3  
 ESPECIALISTA EM FERRAMENTAS DE GESTÃO E PROJETOS USANDO A METODOLOGIA BIM  
 FASE PROJETO EXECUTIVO DATA: 29/06/2023  
 PROJETO EXECUTIVO CÂMARA.pdf .pln FF.pln  
 FOLHA: A1

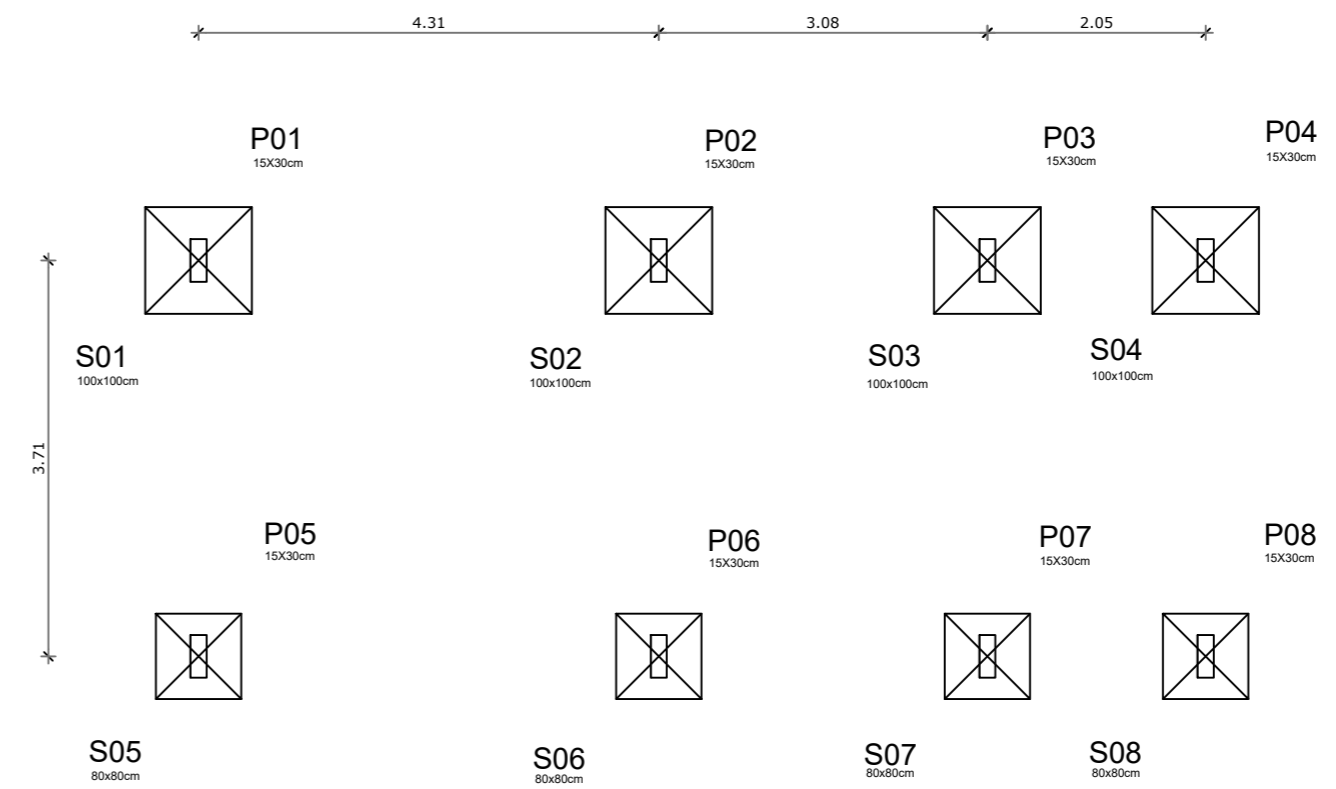
# PLANTA DE FÔRMA VIGA BALDRAME



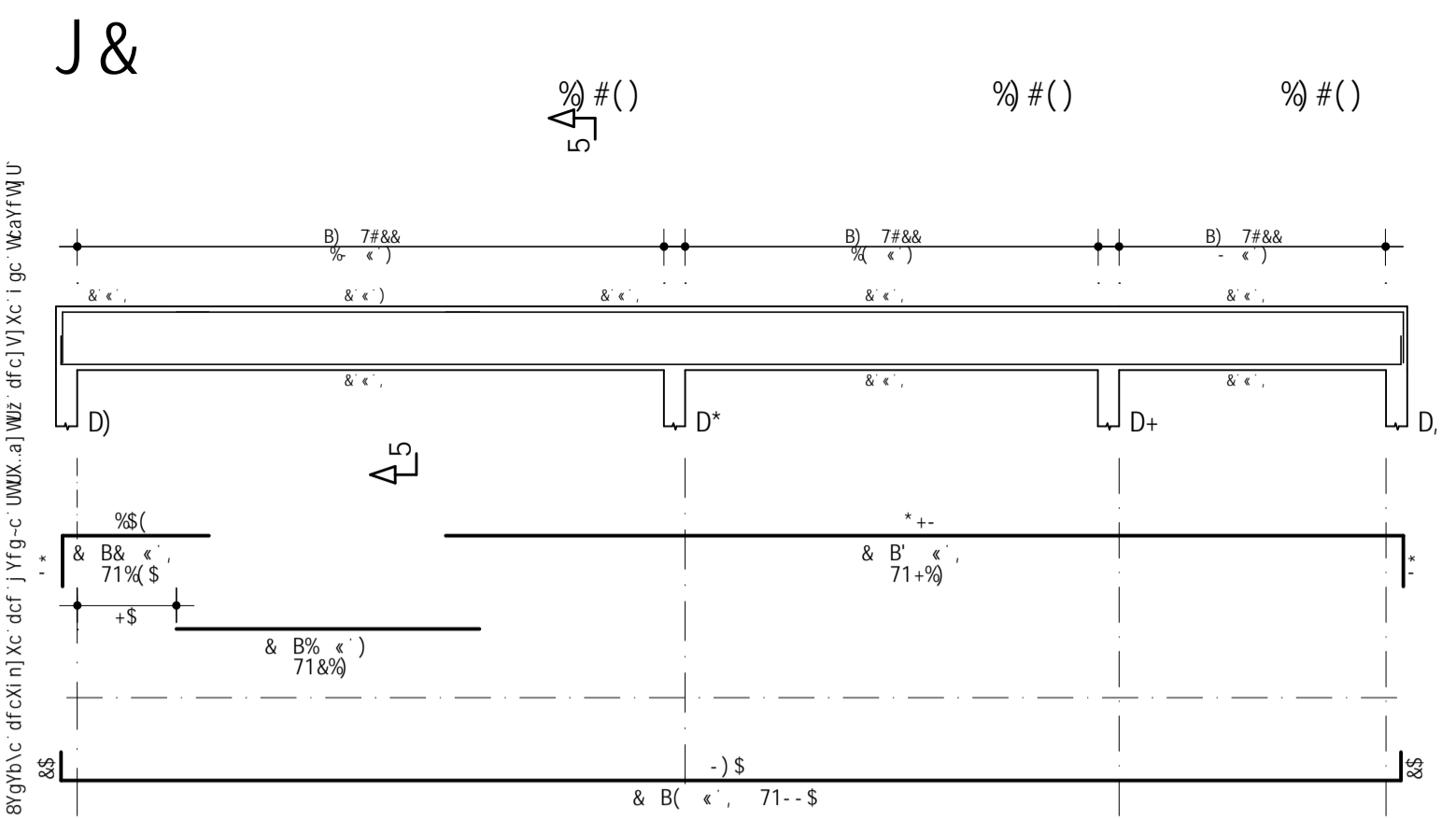
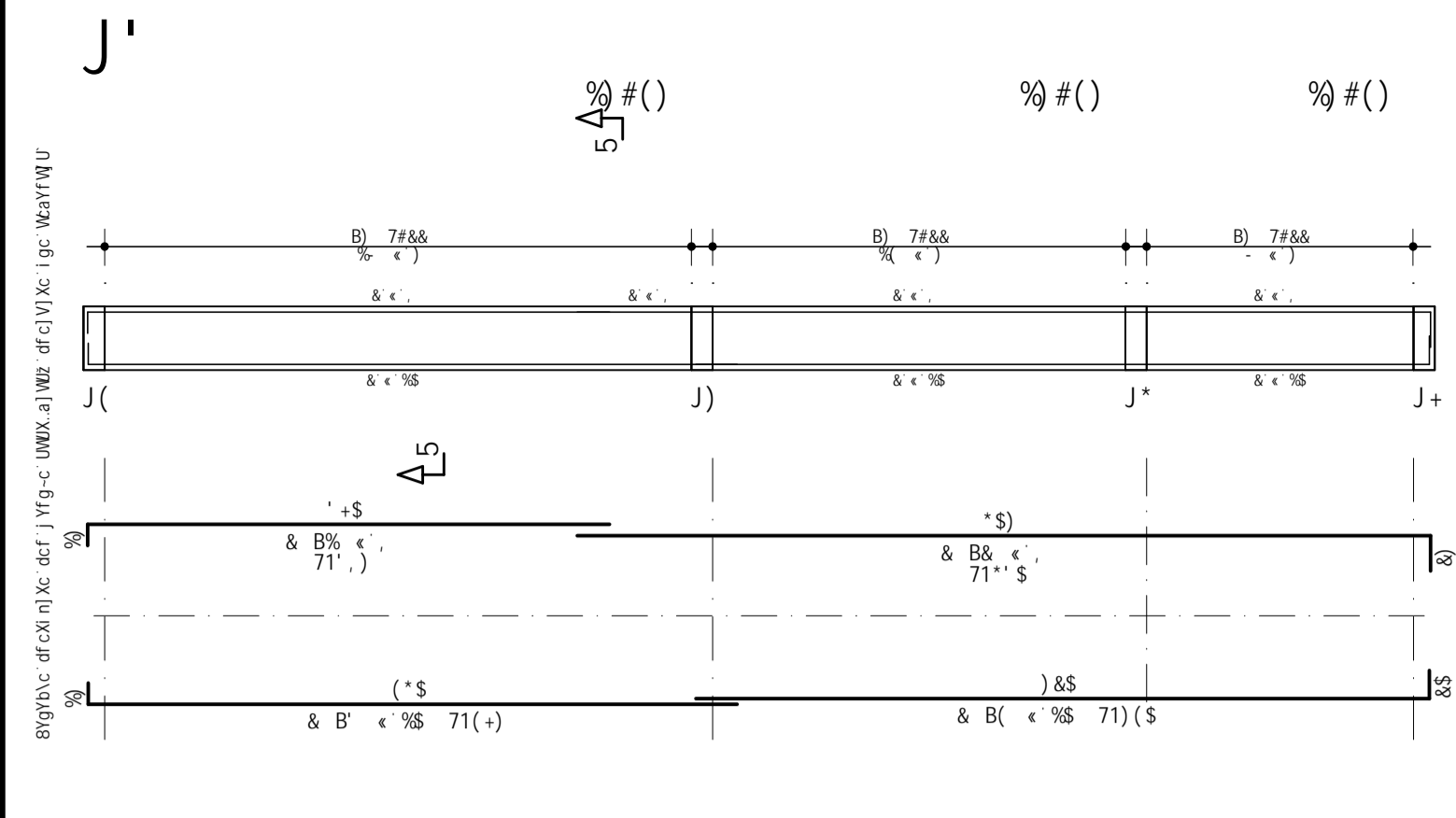
# PLANTA DE FÔRMA VIGA SUPERIOR



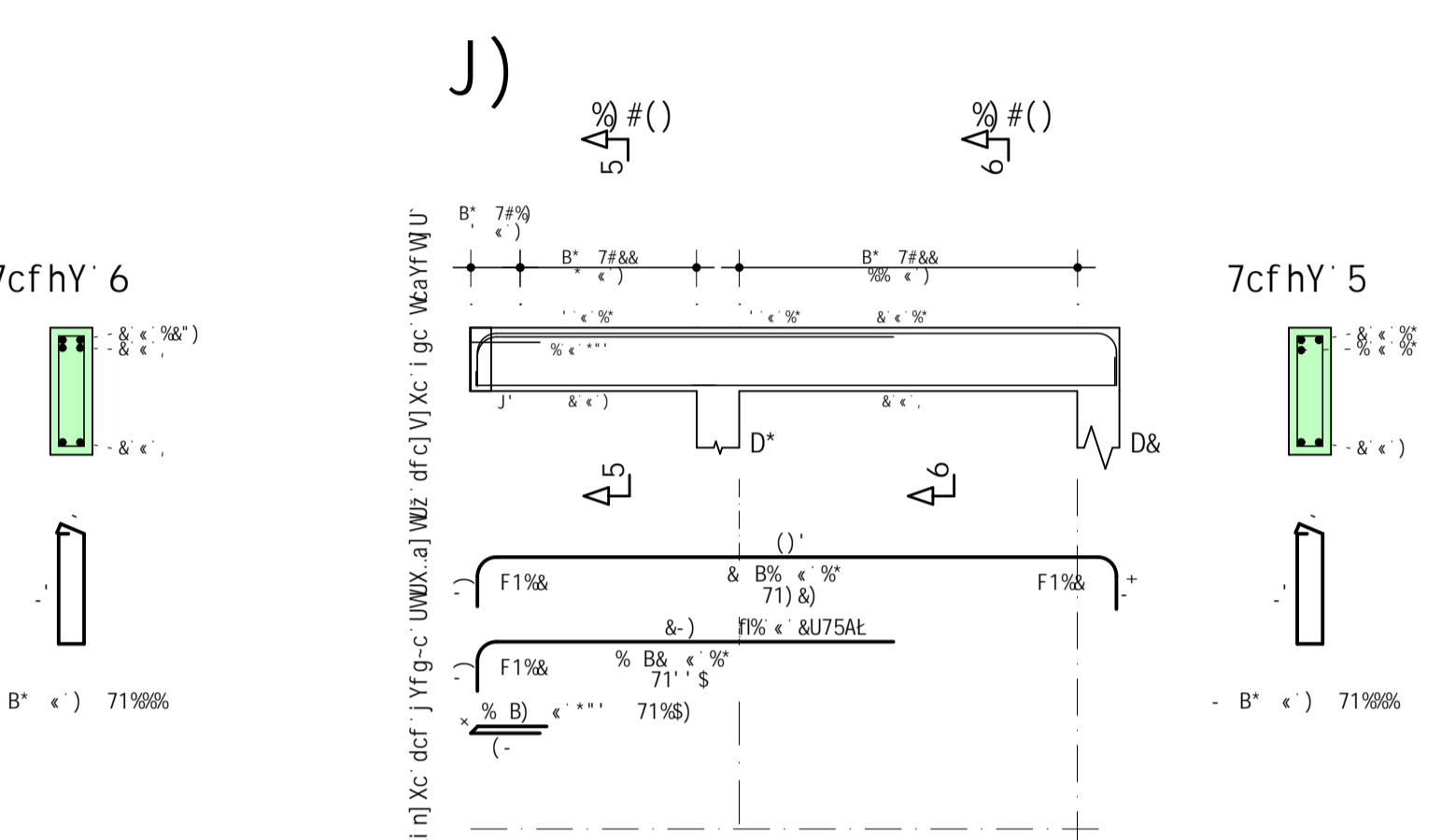
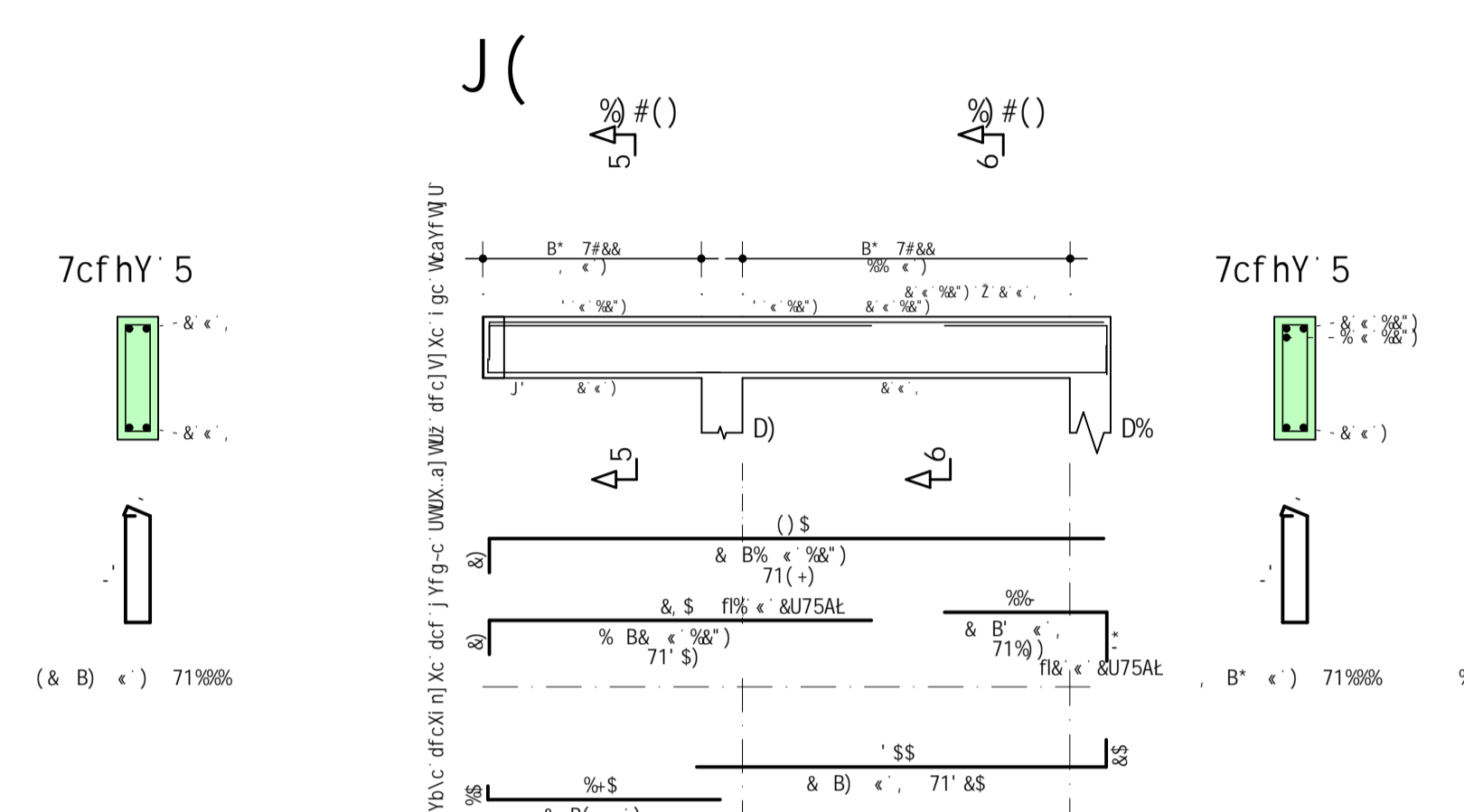
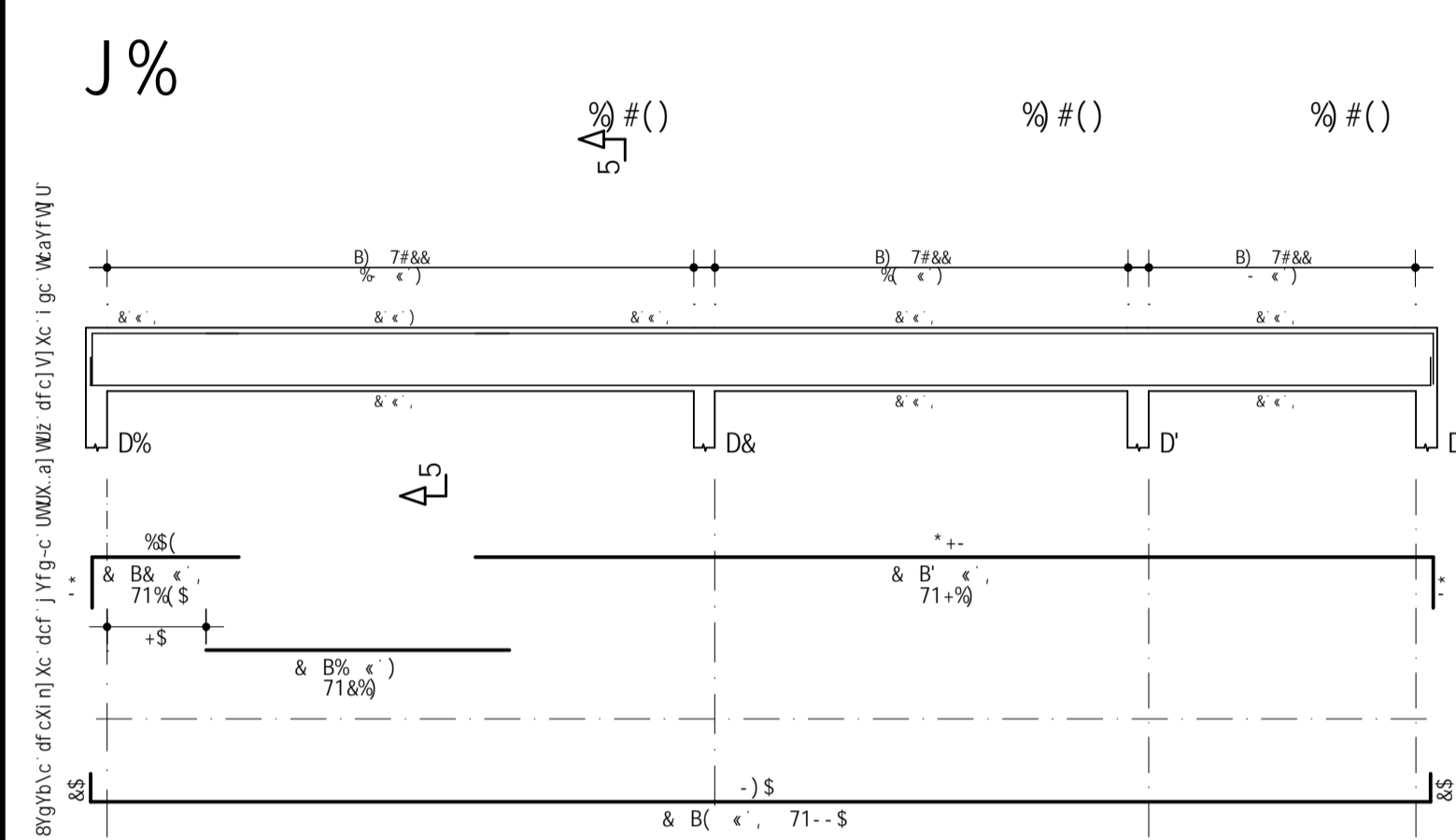
# PLANTA DE FÔRMA SAPATAS



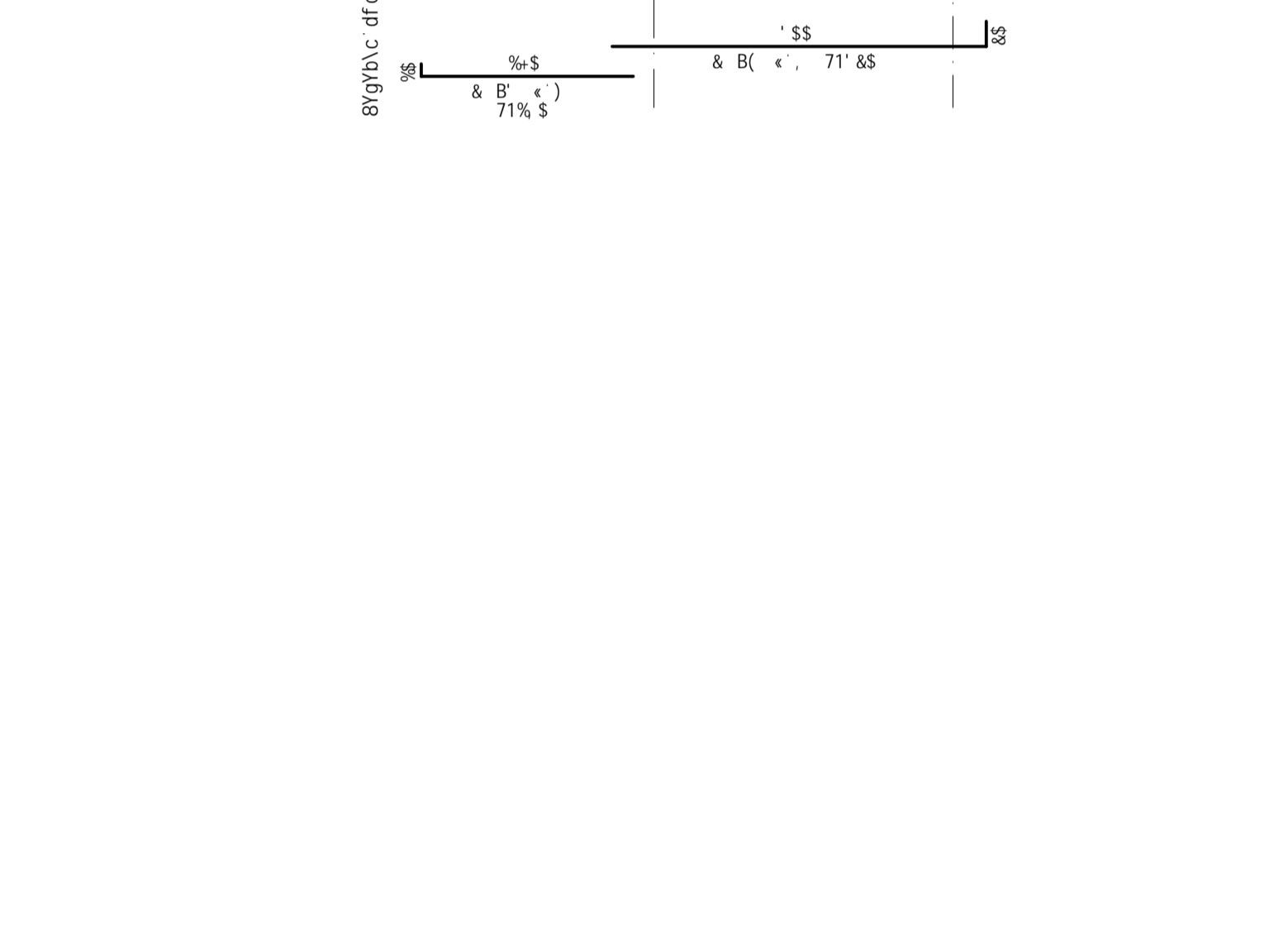
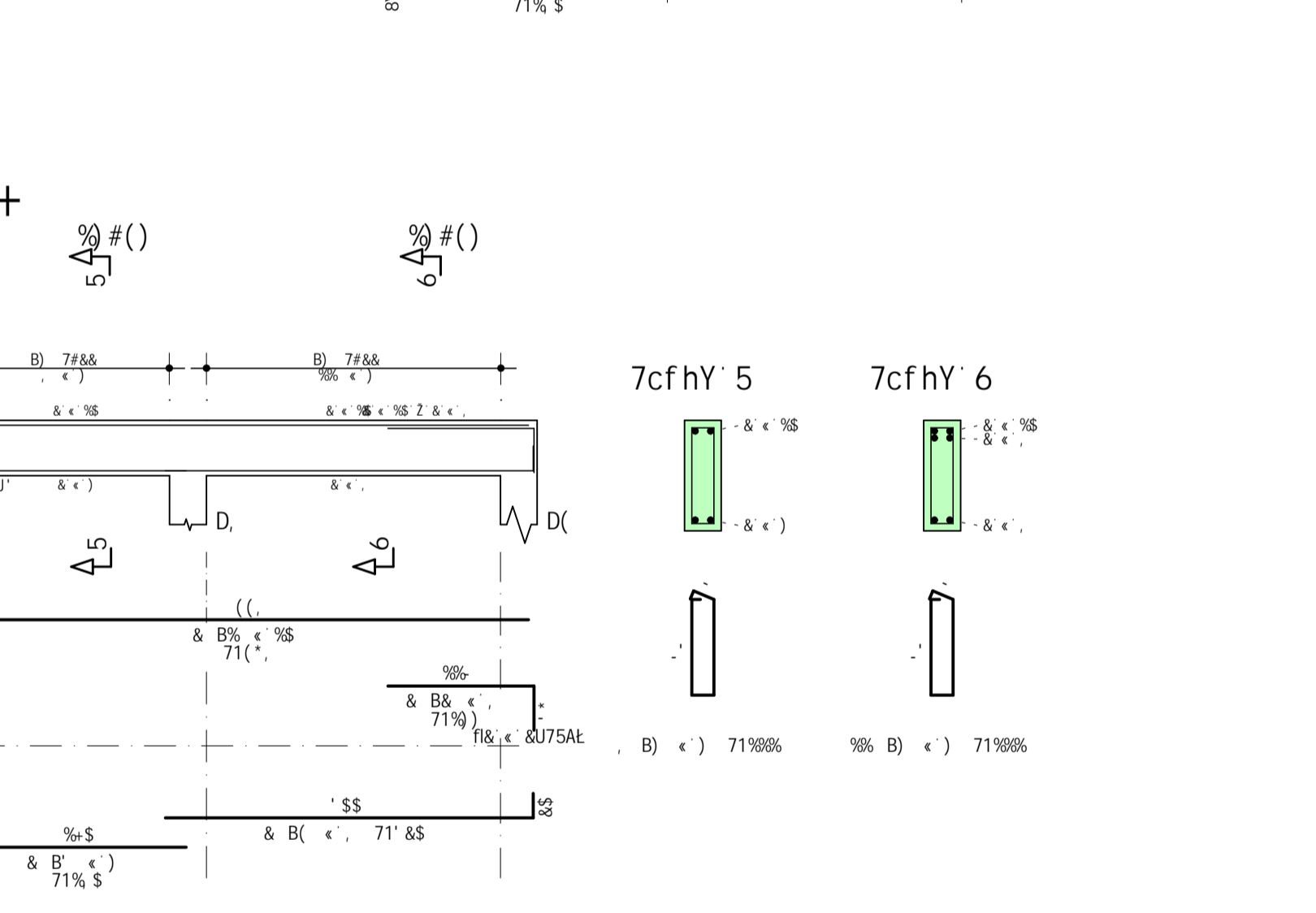
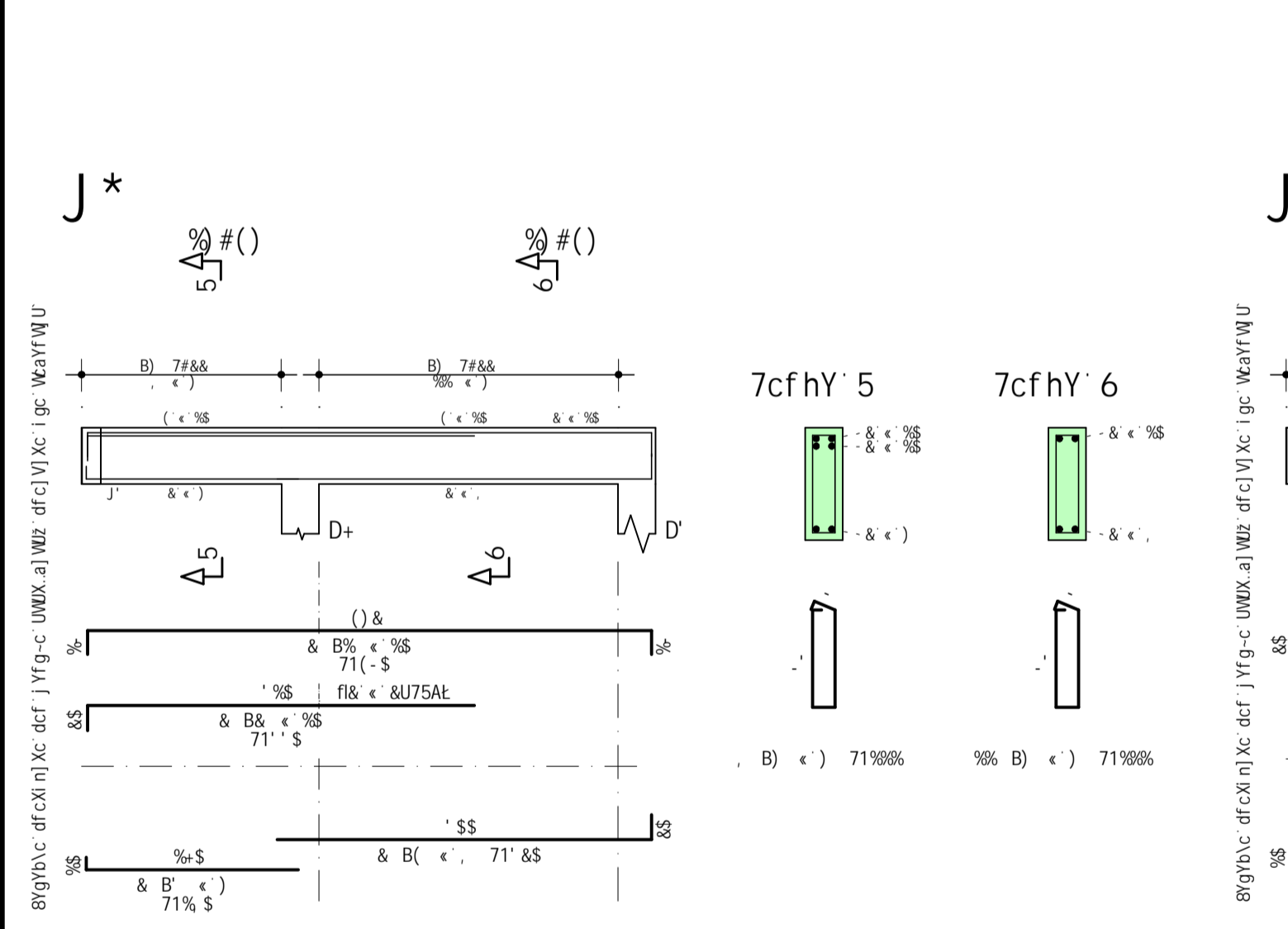
Concreto Fck 30Mpa Esc. indicada				Obra nº: <b>0001</b>
CÂMARA DE VEREADORES DE BARAÚNA-PB CAMARÃ MUNICIPAL DE BARAUNA-PB PLANTA DE FORMÃ VIGA BALDRAME E SAPATAS				Des. nº: <b>0005</b>
				Rev. nº: <b>00</b>
Data: 14/08/2023	Escala: 1:50	Desenho	Coord.	Engº



	5uC	DCG	6=H	E1 5BH	7CADF=A9BHC	HCH5@
J%	aa					
J&						
J'						
J(						
J)						
J*						
J+						



	5uC	6=H	7CADF	D9GC
J%	aa			
J&				
J'				
J(				
J)				
J*				
J+				



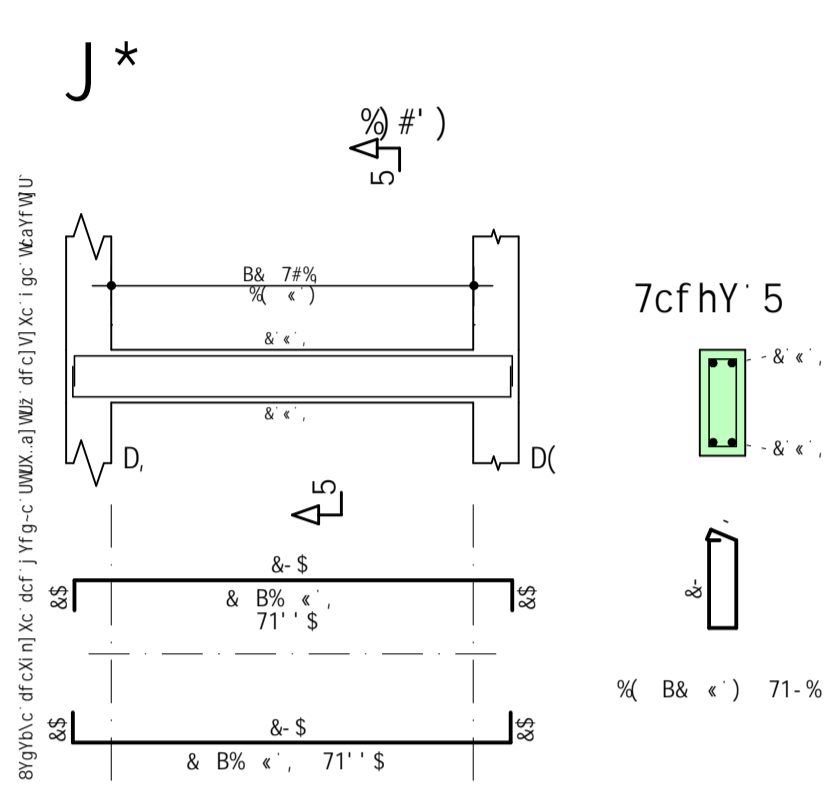
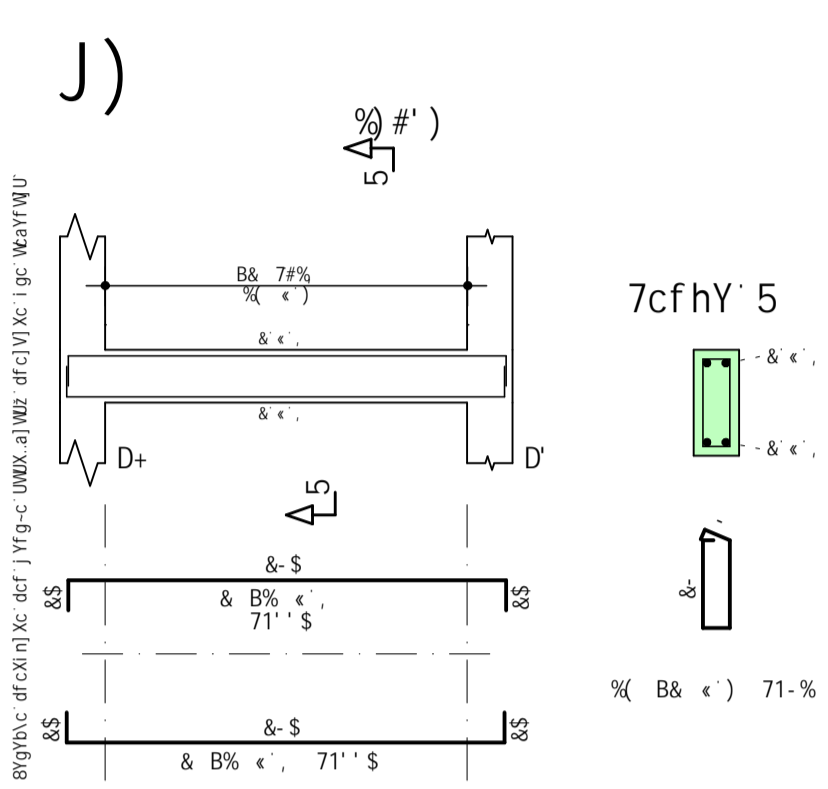
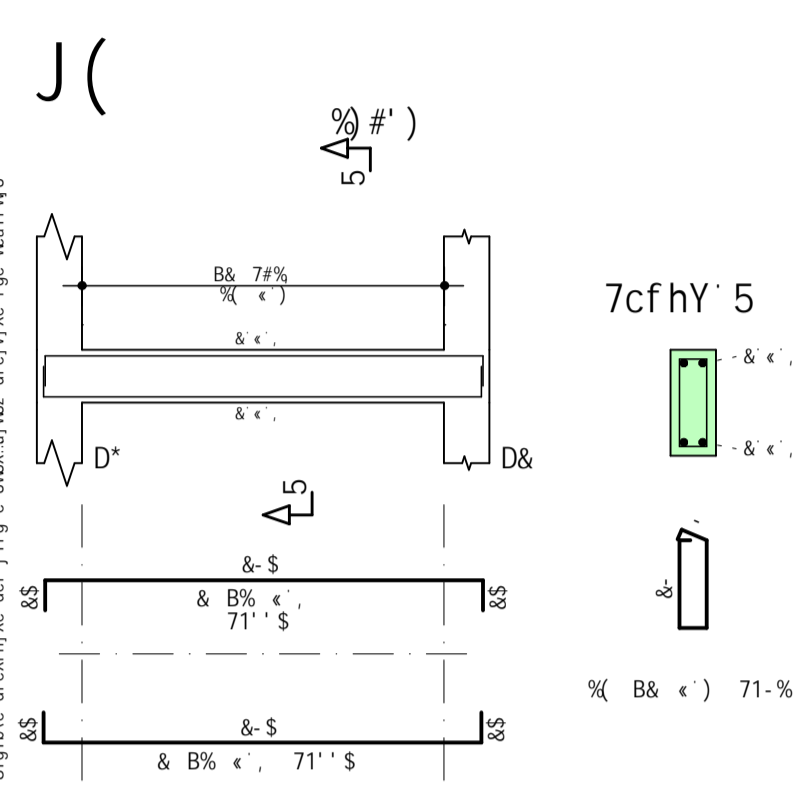
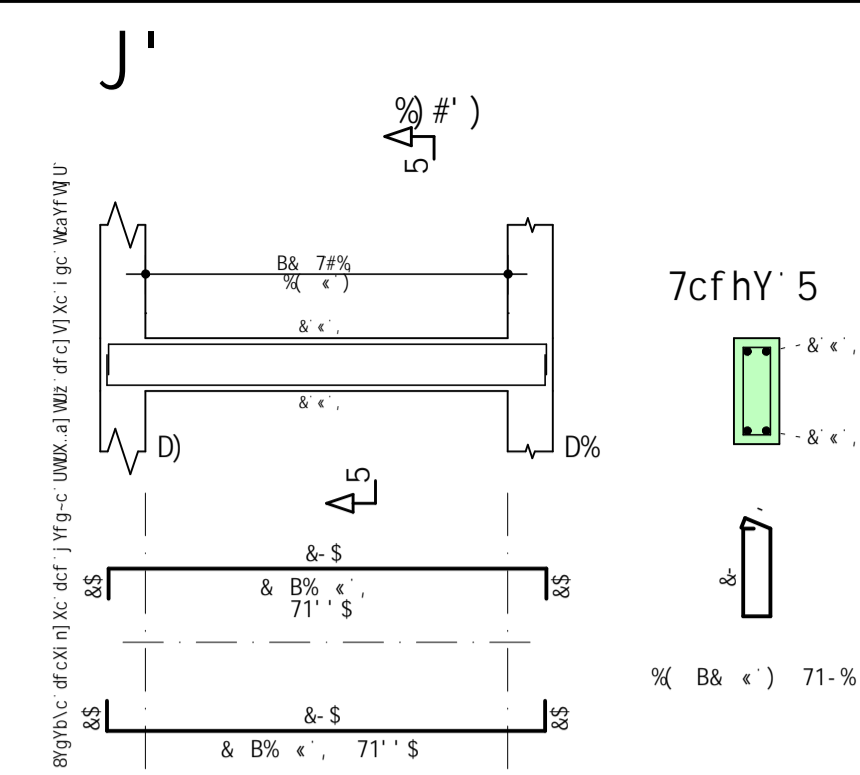
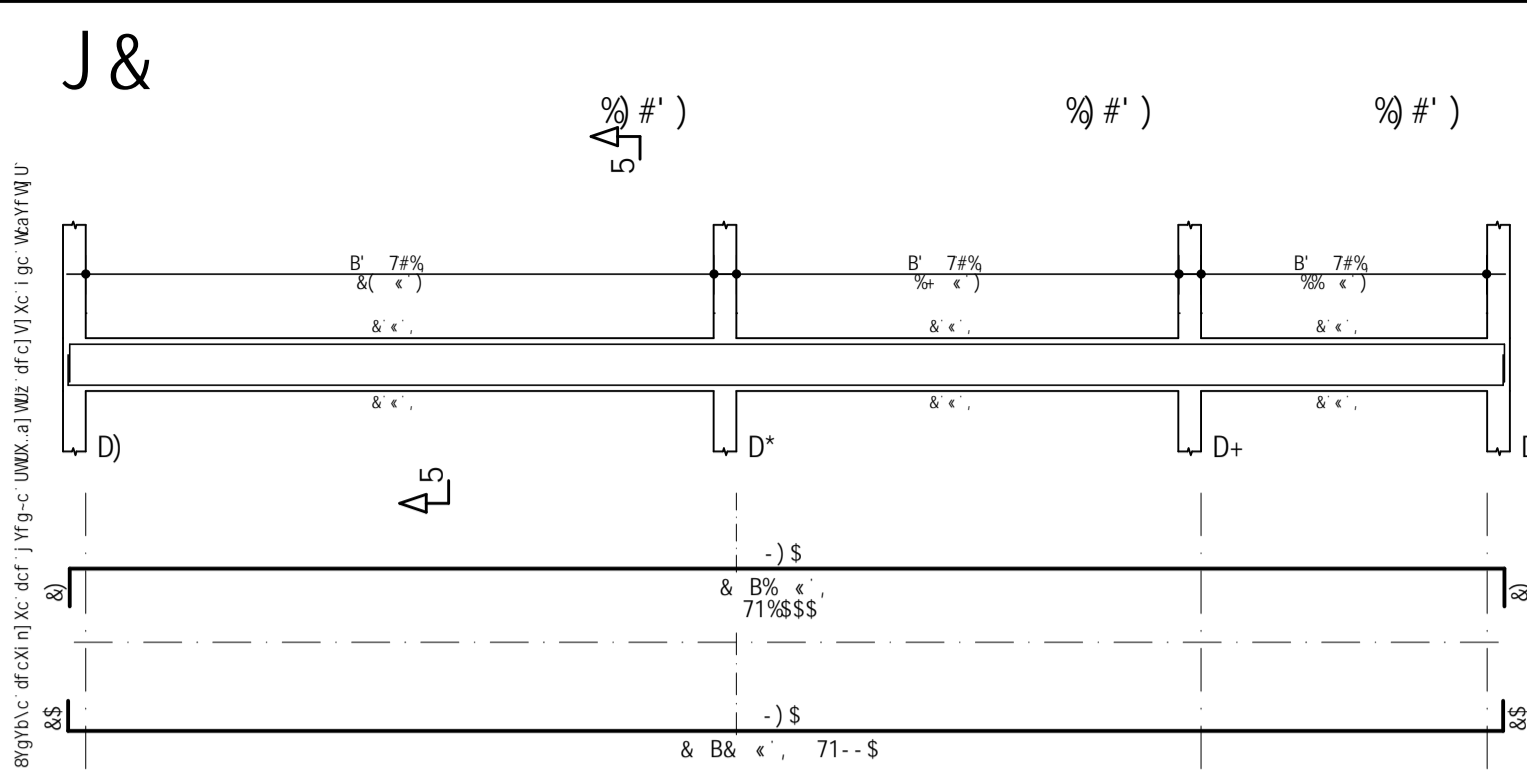
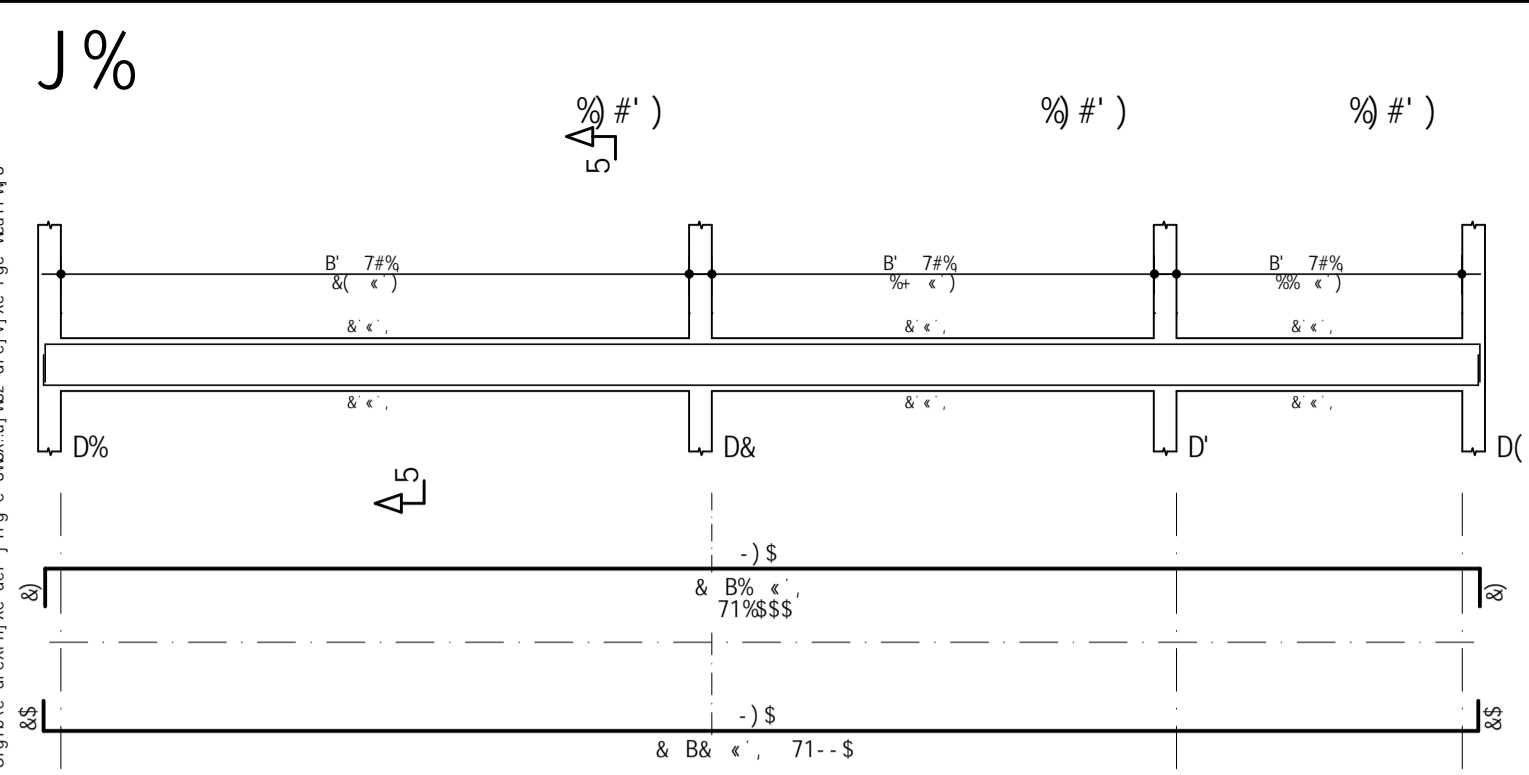
	5uC	6=H	7CADF	D9GC
J%	aa			
J&				
J'				
J(				
J)				
J*				
J+				

8YgYb\c`dfcXl nJ Xc`dcf`j Yfg-c UWX.a] WUZ`dfc] V] Xc`i gc`W`aYfWU

7CB7F9HC	CMS B-C	\$\$\$%
ZVL 1`S ADU	89C B-C	\$\$\$&
97G 1`&`,` ADU		
CAMARA MUNICIPAL DE VEREADORES DE BARAUNA-PB		
REFORMA DA CAMARA MUNICIPAL DE BARAUNA-PB		
PROJETO ESTRUTURAL - DETALHAMENTO DE VIGAS SUP.		
J% # J& # J' # J( # J)		
J* # J+		
89HC	9079HC	9079HC
75AI 7CGJ J-1 S58I F55	700F	9079HC







7CB7F9HC ZVL 1' S ADU				CMS B' C \$\$\$%
CAMARA MUNICIPAL DE VEREADORES DE BARAUNA-PB				BNC B' C
REFORMA DA CAMARA MUNICIPAL DE BARAUNA-PB				\$\$ (
PROJETO ESTRUTURAL - DETALHAMENTO VIGA BALDRAME				
J% # J& # J' # J( # J) J*				FQJ' B' C \$\$
BSIS %(\$, #&S&	907595 % ) \$	89096-C 7501 650# J - 1 S\$-1 FSS	7008'	98: -C

REG 19F BEC 981 757-2858 BEC 70097 7507 7501 650# J - 1 S\$-1 FSS' 08H' 3' 45' 088& 08& - S'